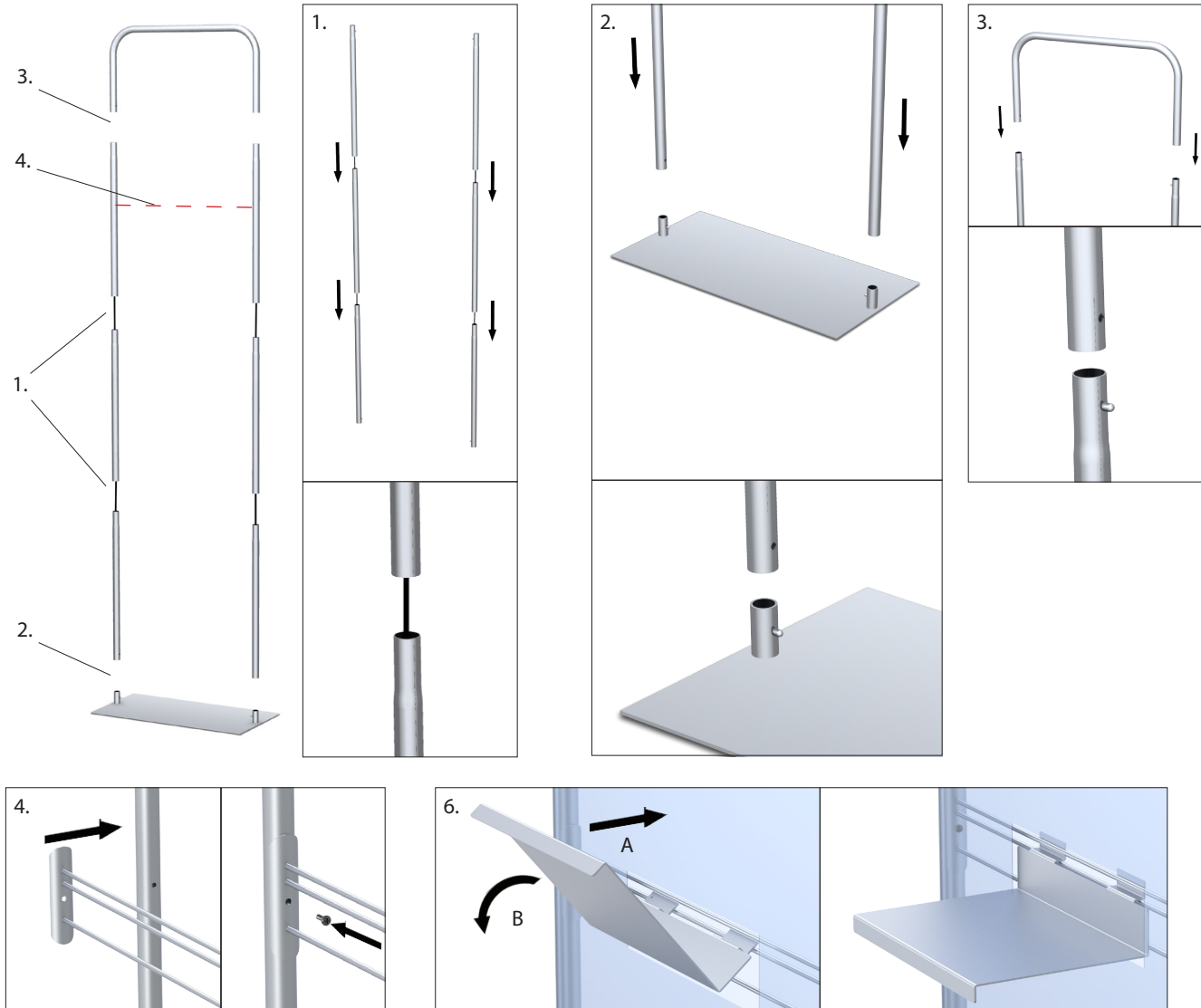


# Harmony Banner Stand - HMN Series

1. Connect upright together by aligning tube sections, then slowly allowing shock cord to pull tube sections together.
2. Push down on button located on base stem, then slide upright over base stem until push button clicks into place. Repeat for the second upright.
3. Push down on button located the top of the uprights, then slide U-shaped section over uprights until push button clicks into place.
4. **For Optional Shelf:** Locate mounting hole on upright and install shelf bracket with screws provided, with double bar section on top.
5. Slide pillowcase graphic over frame to complete unit assembly (not shown).
6. **For Optional Shelf:** Slide shelf in between upper two shelf rods.

NOTE: Model shown below may differ from your model, but assembly instructions remain the same.



HMN1 shown

w/Shelf Option