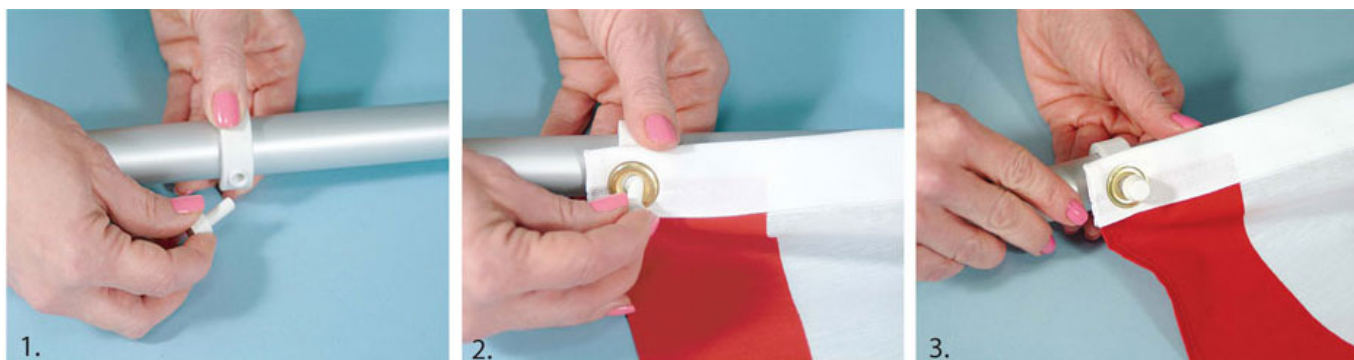


How to use EZ Flagpole Mounting Rings
(For flags/banners with grommets - indoor or outdoor use)

1. Unscrew plastic screw from the mounting ring.
2. Slide ring onto flagpole.
3. Thread plastic screw through the flag's grommets and screw back into mounting ring to secure to pole.



For more how-to's and flag etiquette, visit <https://www.flagandbanner.com/faq>